



# St Brendan's Primary School



Melbourne Archdiocese  
Catholic Schools

Where Every Child is Known, Encouraged, Challenged  
and Supported



**Foundation Information Booklet**

# Welcome to St Brendan's Primary School

As parents and your child's first teachers, you are an important and essential link in the educational chain. We recognise that when parents feel comfortable with and supported in their choice of school for their child, children will see themselves as part of a safe and engaging learning environment. Great things happen when parents and teachers work together for the good of the child.

St Brendan's is a Catholic parish primary school. We welcome Catholic children and other children and their families who are respectful and supportive of our Catholic identity. I ask you to read our Vision and Mission Statements. These statements form the basis of our educational philosophy, and they give 'vision and voice' to our purpose as primary school educators in Somerville.

Included in this book is a great deal of information which will help you and your child to make the very best of the years you spend associated with our school. This information will ensure a smooth transition for your child (and you) into school life

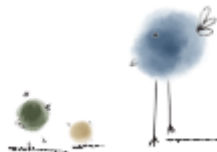
## People you need to know:

Parish Priest	Father Shymon Thekkekalathunga
Principal:	Mrs Sue Carr
Deputy Principal:	Mrs Bernadette Turner
Office Administration:	Ms Wendy Ziino Mrs Louise Street



## School Hours: 8.45am – 3.15pm

- The playground is supervised by staff members from 8:15am – 3:30pm
- Children must be at school by 8:40am so that they are ready when lessons start at 8:45am
- Morning Recess: 11:00am – 11:30am
- Lunch Play: 1:05pm – 1:45pm
- Dismissal is at: 3:15pm



# Our Vision

In the spirit of Jesus Christ and St Brendan as our model and guide, we aspire to be the first choice in primary education for the Catholic families of Somerville and surrounds. We aspire to be a school that welcomes everyone who seeks education for their children. We believe that in order to flourish in life, every child is known, encouraged, challenged, and supported to become the very best version of themselves.



# Our Mission

St. Brendan's is a Catholic primary school whose mission is to teach, nurture, support and inspire the spiritual, physical, intellectual, relational, and emotional development of each child who belongs to our school community.

We welcome parents as important partners in the education of their children.



# Child Safety Standards

St Brendan's Primary School is committed to providing a safe environment for all students and young people and will take active steps to protect them against abuse.

To achieve this, the school has developed and actively enforces Child Safety strategies to ensure that any person involved in 'child connected work' is aware of their obligations & responsibilities for ensuring the safety of all children under their care.

In accordance with requirements of the Victorian Government's Ministerial Order No 1359, St Brendan's Primary School maintains a culture of 'no tolerance' to child abuse. To achieve this, it has established a holistic Child Safety Strategy incorporating the processes, policies & procedures listed below.

St Brendan's Primary School Child Safety Strategy includes, but is not limited to the:

- Establishment of strategies for embedding a culture of child safety at the school;
- Maintenance & communication of a policy affirming the school's commitment to child safety and the promotion of an environment where children feel respected, valued and encouraged to reach their full potential;
- Maintenance & implementation of a Child Safety Code of Conduct;
- Established processes for screening, supervision, training, and other human resource practices to reduce the risk of child abuse & promote a child safe learning environment;
- Maintenance & Communication of procedures for responding to and reporting child safety complaints, suspected abuse, disclosures or breaches of the Child Safety Code of Conduct.
- Risk Management strategies to identify and reduce or remove risks of child abuse
- Maintenance of strategies to promote student participation & empowerment in creating an environment where they feel respected and valued and are capable of reaching their full potential.

St Brendan's Primary School Child Safety Standards apply to any individual employed by the school, employed under contract, volunteers or contracted service providers. Failure to comply with any aspect of the school's Child Safety Standards may result in criminal proceedings in accordance with the Children, Youth and Families Act 2005 (Vic.), the Crimes Act 1958 (Vic.) and the recommendations of the Betrayal of Trust Report 2013.

We have in place and available on our website:

- St Brendan's Child Safety Policy and Child Safety Policy Student Version



# Preparing your Child at Home – Transition from Home to School

When children begin school they are, in some ways, moving away from the world of parent and family and into the world of children. It is a big step on the pathway towards growing up and most children look forward to it.

They are keen to make new friends, learn new things and feel like a ‘grown-up school person.’ In the process, there will be many wonderful experiences for children to enjoy and share with their parents. At the same time, all of this can be stressful for both children and parents, if they are not sufficiently prepared for the changes or if the real experience is a ‘bit of a let down’. Some children, for example, expect to be able to read and write and ‘do sums’ by the end of the first day. Some expect all children to like them and to make lots of new friends straight away. Parents will need to focus on the positive things and explain to their children that all this will take time.

Before going to school children may have been at preschool, in child care or at home, but primary school is a very different place. There are more children, and your child will be amongst the youngest and smallest. The first year at school is often a new step for a parent as well. Education has changed a lot since your own school experience. If you had unhappy memories of school, please put them behind you, so parents and the school can give your child a positive start.

We look forward to developing your child physically, mentally, socially and emotionally in partnership with you. So far you have been your child’s main teacher from watching him or her speak their first words to taking their first wobbly steps. But sending your child to school is not about giving up your teaching role.

Think about when your children learned to walk. They progressed in bursts, reaching milestones in their own good time. Perhaps they crawled and then pulled themselves up on the furniture, trying hard to stand. Then they tried taking their first steps.

Likewise, at school, children progress in their own way. Some children pick up some things quickly, but need more time for other things. When learning new skills children need the conditions to be right, and they have to be ready. In each classroom, teachers will be creating a safe and happy environment where children are valued, praised and encouraged to ‘have a go’.

Learning at schools is related to real-life learning. Children are encouraged to make sense of the world around them through real-life experiences. In classrooms in the early years of schooling, play is an important part of the curriculum.

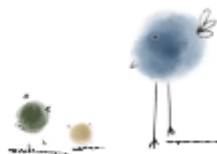
You can support your child by getting to know the teachers, becoming involved with parent meetings and school activities, helping in the classroom, standing for School Advisory Board, joining the Social & Fundraising Committee and keeping in contact with the school.

(Source: Your Child’s First Year at School by J Connor and P.Linke)



# Ways Parents Can Work in Partnership With Teachers to Support Your Child's Learning

- Know what your child's teacher is trying to achieve
- Keep your expectations reasonable and positive
- Support your child's teacher's expectations and activities at home
- Send your child to school ready to learn and on time each day
- Inform us early of your child's challenges and changes
- Skill your child to work with, and be respectful, of others
- Respectfully seek joint solutions to problems and difficulties
- Where possible, encourage your child to participate fully in class and school activities
- Trust your teacher's knowledge, professionalism and experience
- Speak in a positive manner about what happens at school
- Work with us to build resilience in your child



# The following are some areas in which you can assist your child's development.

## RESPONSIBILITY

Encourage your child to:

- Care for personal property (jumper, sun-hat, water bottle, lunch box)
- Care for school property
- Put on and do up their own shoes where possible
- Dress and undress unaided (jumpers can be very tricky!) including buttons and zips
- Put away their belongings and tidy up after themselves
- Manage in the toilet
- Wash hands after going to the toilet
- Listen carefully to adults and their peers
- Follow directions and instructions
- Speak up or seek assistance when required
- Help and participate in all activities at home

Children enjoy assuming responsibilities within their capabilities. They become confident and reliable if given the opportunity to attempt and manage simple tasks.



# Arrangements for Foundation Students



## Specialists

Students participate weekly in Specialist classes – Visual Art, Music/Performing Arts, Yoga (fortnightly), Physical Education, Science, STEM, Auslan and Library. Participating with specialists expands learning capabilities in a range of learning areas. Students at St Brendan's are fortunate to have a whole school production every two years, which is particularly exciting.

**Learning Diversity at St Brendan's**- ensuring that all students are meeting their full potential as learners.

At St Brendan's, students are supported by our team of 9 wonderful Learning Support Officers (LSO's) who work in all classes across the whole school. It is vital that, as a team, we build a working partnership all working together towards learning success for the student. This includes Parents/Guardians/Teachers/Specialists. Personalised Learning Plans (PLP) SMART Goals are created for students who require extra support to target, teaching & learning.

## Enquiries

Foundation parents are always welcome to visit and chat with the teacher when they are not engaged in teaching. However, if you need to hold a long and detailed discussion, please make a prior arrangement to do so. The first few days are extremely busy and it would be appreciated if you could allow a little settling in time before requesting any long discussions.

The following are a few observations which may answer any concerns you have during the early days.

- Some children do get very tired and irritable. (They have usually behaved perfectly at school all day.)
- Some need extra affection and understanding from parents at this time.
- Some eat very little during the day.
- Some refuse to discuss the school day happenings – don't keep asking, they will begin to tell you things later on. They have done a lot and have been learning many new routines!

All these things usually resolve themselves after a week or two, when children have developed a secure relationship with their teacher and have made friendships with the class and with their buddies.

## **BUDDIES (Foundation & Year 6)**

The Foundation students will meet their Year 6 buddies in the first few weeks of the school year.

### **Supervision**

Children are supervised by their class teacher while eating play lunch and lunch in the classroom. When playing outside, they may play in any area of the school ground that is supervised, except the Middle and Senior Adventure Playground.

In addition, the Foundation students are well looked after by their Year Six buddies whom they meet in the first few weeks of school.

Please encourage older brothers and sisters to allow their little brothers and sisters some “breathing space” to get to know their Year Six buddies and the general routine. They can, occasionally, be just a little overprotective.



**We look forward to welcoming  
you at St Brendan's.**



**19 Austin Road, Somerville VIC 3912  
Email: [stbs@sbsomerville.catholic.edu.au](mailto:stbs@sbsomerville.catholic.edu.au)  
Ph: 03 5977 7277**